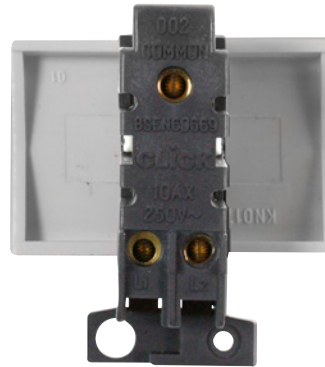


# Technical Specification

Product Code: MD009BN

Description: 10AX Ingot 2 Way Paddle Switch Module



## General Information

<b>Dimensions</b>	48mm (W) x 52mm (H) x 20mm (D)
<b>Aperture Dimensions</b>	48mm (W) x 31.5mm (H)
<b>Finish</b>	Black Nickel
<b>Materials</b>	Rocker Switch: Urea Rear Housing: Nylon Switch Cover: Stainless Steel Terminals: Brass Terminal Screws: Steel & Yellow Passivated Contacts: Silver "on-lay" Copper / Brass Internal Busbars: Formed Pressed Brass
<b>Maximum Voltage</b>	250V 50Hz
<b>Load Rating</b>	10AX (Suitable For Inductive Loads)
<b>Terminal Size</b>	3.5mm $\varnothing$
<b>Terminal Torque</b>	0.4Nm
<b>Terminal Capacity</b>	4 x 1.5mm <sup>2</sup> or 2 x 2.5mm <sup>2</sup>
<b>Back Box Depth</b>	Dependent On Plate Used
<b>Operational Temperature</b>	-5°C to +40°C
<b>Warranty</b>	10 Years
<b>Standards</b>	BS EN 60669-1:1999 +A1:2002 +A2:2008

## Additional Information

Ensure that the mains supply is isolated before commencing installation and refer to the circuit diagram with the relevant product.  
Bare earth cables must always be covered with appropriate sleeving and wired to the earth terminal.